

HENNING WOLFHAGEN

COPENHAGEN · DENMARK

ESTABLISHED 1925

HANDMADE PEWTER

ARTISTS

EBBE SADOLIN

AND

HENNING WOLFHAGEN

PRINTED BY J. JØRGENSEN & CO.

PHOTO: A. & TH. KNUDSTRUP-ANDRESEN

CLICHÉ: KØBENHAVNS KLICHÉFABRIK

IN THE DANISH museums may be found a great deal of articles for use in pewter. In the olden time these articles in pewter were used very much, but times change and for a long period pewter was very little valued. But now for the last few years it has become almost a fashion to own articles in pewter. This renaissance of pewter-ware in Denmark may be traced back to the World-Exhibition in Paris 1900, where many different cups and dishes in pewter by the Frenchman Jules Brateau attracted attention. Mogens Ballin then began to use this metal, and was soon followed by several others, but he did not create a special pewter-style. In this Just Andersen has been more successful.

When you have turned over the leaves of this book of plates, you have made yourself acquainted with the very latest of Danish pewter-art. Reproductions are, however good they may be, never able to give a perfectly correct impression of an object. By comparing the measure of the article with the weight you will find, that my things are unusual heavy. The surface has a quiet, ash-gray colour, which is very delicious. It is obtained through a chemical treatment and an elaborate grinding executed by hand even in the case of the smallest things.

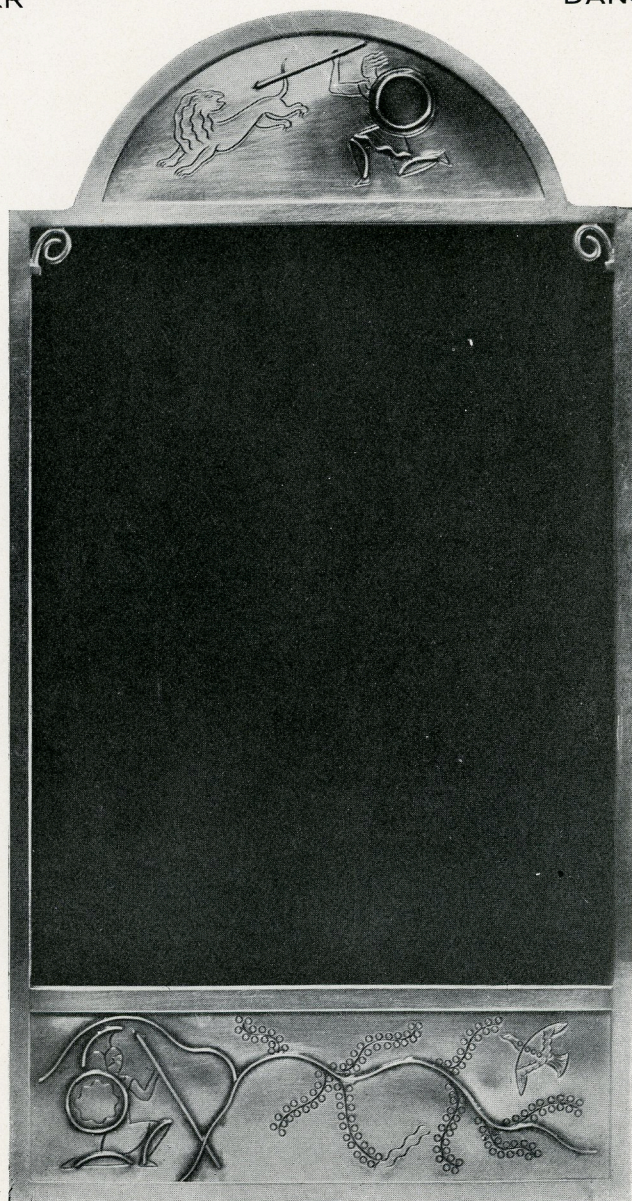
This delicate surface may be preserved if you never use any liquid polish. The articles should only be rubbed with a soft cloth. Stains from greasy fingers may be removed by the use of spirit or soap-water. People often insist, that it is impossible to keep ash-trays made of pewter clean. This is not the case, and the remedy is very simple, just rub the ash-tray with the ashes, and there will never be any black spots on it.

From the reproductions you will get acquainted with the refined lines of my articles, and now you know how to preserve the surface. I will always be at your service, if you should want any further information. And wherever you may be in the world, I may always be reached by mail or by telegraph, and I will be highly interested in your inquiry. Only write to

HENNING WOLFHAGEN
Copenhagen — Denmark

PEWTER

DANSK TIN



500

MIRROR

Height 43,5 cm.

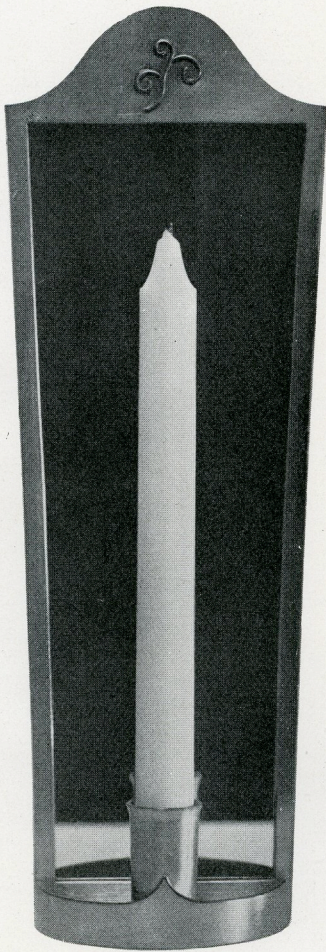
Weight 1235 g

ARTIST E. SADOLIN

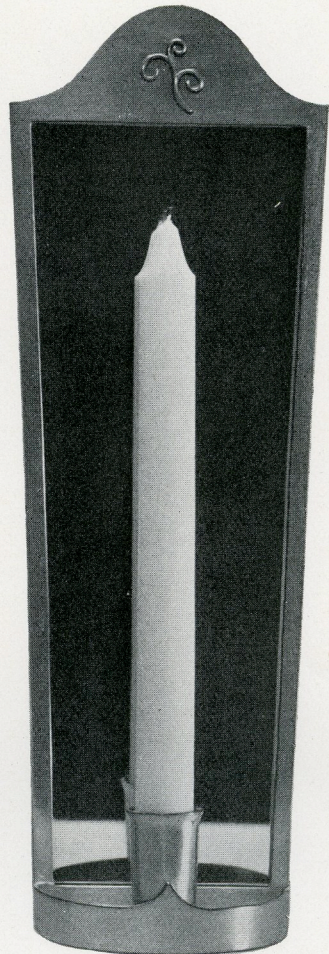
HENNING WOLFHAGEN . . . COPENHAGEN

PEWTER

DANSK TIN



498



499

SCONCES WITH MIRRORS

Height 29,5 cm

Weight 420 g

ARTIST H. WOLFHAGEN

HENNING WOLFHAGEN . . . COPENHAGEN

PEWTER

DANSK TIN



727

MAZER

Height 34 cm

Weight 1795 g

ARTIST H. WOLFHAGEN

HENNING WOLFHAGEN . . . COPENHAGEN

PLATE 3

PEWTER

DANSK TIN



702

Height 18 cm

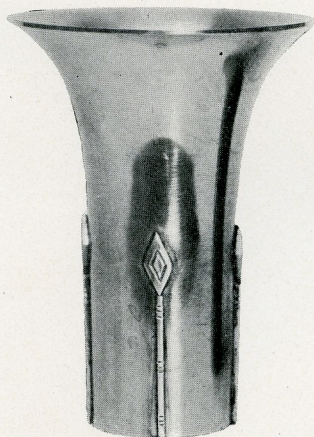
Weight 350 g



768

Height 18 cm

Weight 390 g



783

Height 11,5 cm

Weight 180 g



761

Height 11,5 cm

Weight 145 g

FLOWER-CUPS

ARTIST H. WOLFHAGEN

HENNING WOLFHAGEN . . . COPENHAGEN

PEWTER

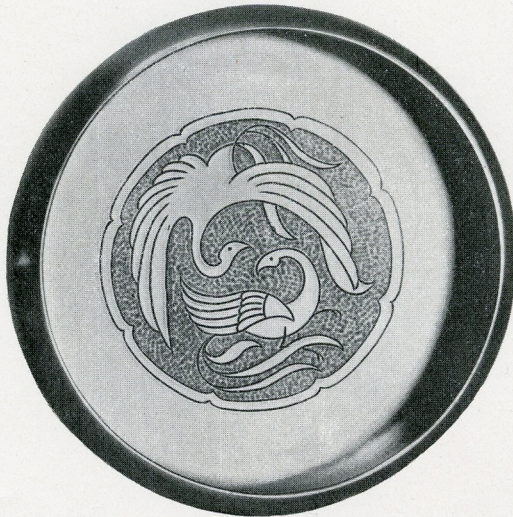
DANSK TIN



774

Diameter 15 cm

Weight 325 g



775

Diameter 15 cm

Weight 325 g

ASH-TRAYS

ARTIST H. WOLFHAGEN

HENNING WOLFHAGEN . . . COPENHAGEN

PEWTER

DANSK TIN



781

BONBONNIÈRE

Height 10 cm

Weight 285 g

ARTIST H. WOLFHAGEN

HENNING WOLFHAGEN . . . COPENHAGEN

PEWTER

DANSK TIN



788

CANDLESTICK

Height 25 cm

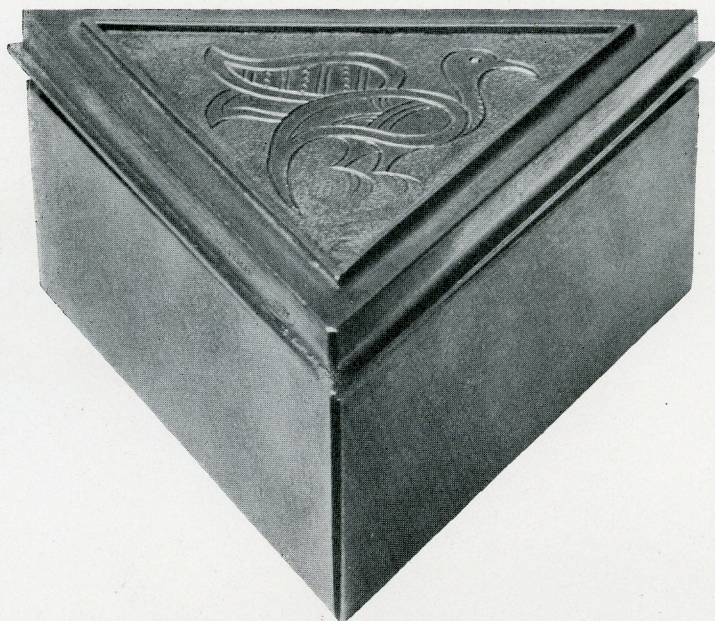
Weight 570 g

ARTIST H. WOLFHAGEN

HENNING WOLFHAGEN . . . COPENHAGEN

PEWTER

DANSK TIN



514

TRIANGULAF. BOX

10,5×10,5×10,5×5 cm

Weight 360 g

ARTIST H. WOLFHAGEN

HENNING WOLFHAGEN . . . COPENHAGEN

PEWTER

DANSK TIN



10×8×5 cm

588

Weight 475 g

ARTIST E. SADOLIN



10×8×5 cm

587

Weight 475 g

ARTIST H. WOLFHAGEN
CIGARET-BOXES

HENNING WOLFHAGEN . . . COPENHAGEN

PEWTER

DANSK TIN



726

BOWL

Diameter 18 cm minus the ears

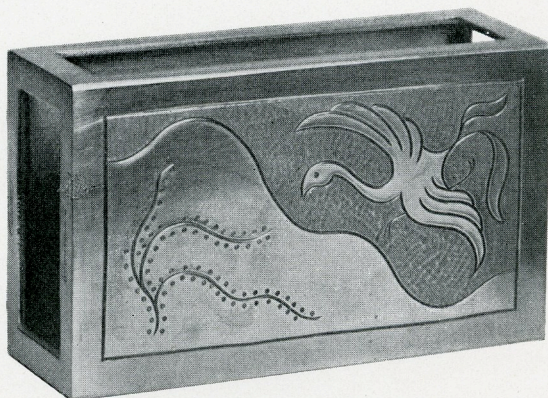
Weight 540 g

ARTIST H. WOLFHAGEN

HENNING WOLFHAGEN .∴. COPENHAGEN

PEWTER

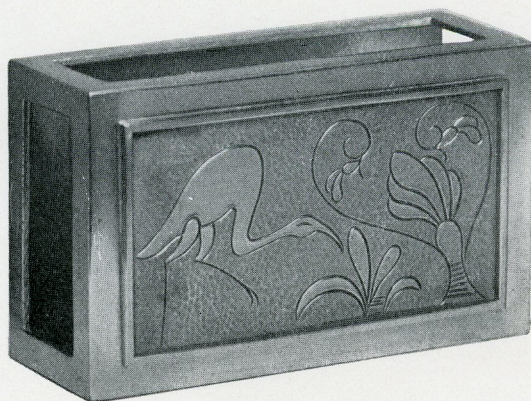
DANSK TIN



10,5×6,3×3,6 cm

776

Weight 190 g



10,5×6,3×3,6 cm

777

Weight 205 g



591

5,9×3,9×1,9

Weight 45 g

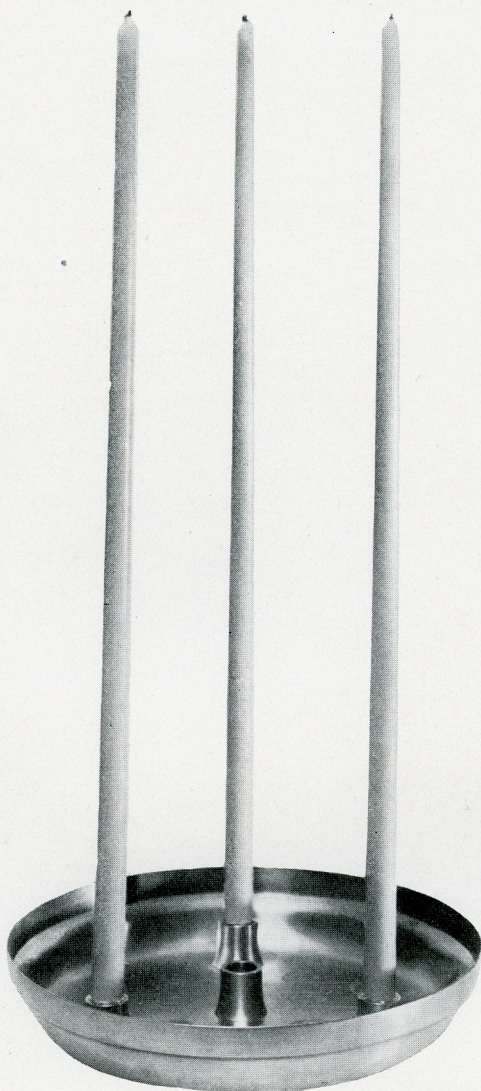
MATCH-CASES

ARTIST H. WOLFHAGEN

HENNING WOLFHAGEN . . . COPENHAGEN

PEWTER

DANSK TIN



^{727X}
787
BOWL WITH SOCKETS
FOR FOUR CANDLES

Diameter 30 cm

Weight 1720 g

ARTIST H. WOLFHAGEN

HENNING WOLFHAGEN . . . COPENHAGEN

PEWTER

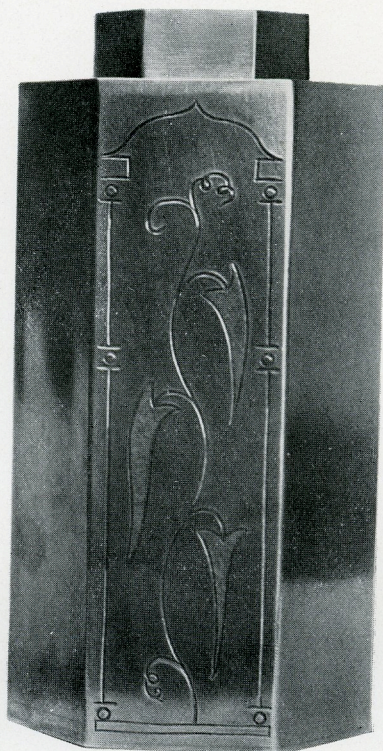
DANSK TIN



481

Height 15 cm

Weight 485 g



282

Height 17 cm

Weight 570 g

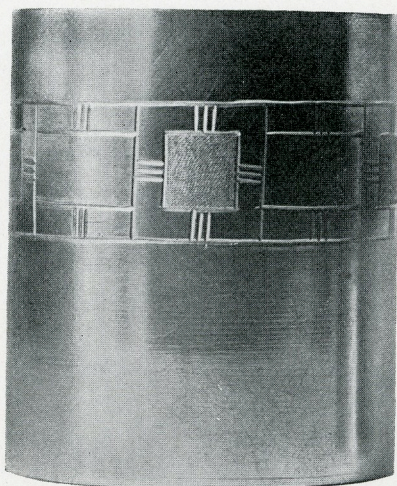
TEA-CADDIES

ARTIST E. SADOLIN

HENNING WOLFHAGEN . . . COPENHAGEN

PEWTER

DANSK TIN

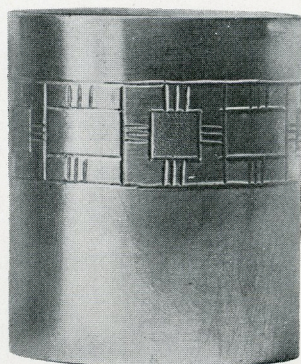


447

CIGAR-CUP

Height 7,5 cm

Weight 175 g

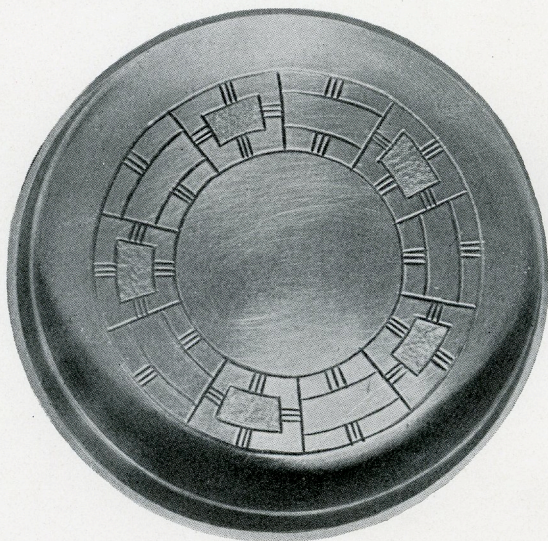


596

CIGARET-CUP

Height 5,5 cm

Weight 100 g



441

ASH-TRAY

Diameter 11 cm

Weight 200 g

ARTIST H. WOLFHAGEN

HENNING WOLFHAGEN . . . COPENHAGEN

PEWTER

DANSK TIN



735

TEA-TRAY

Diameter 14,5 cm

Weight 230 g



637

ASH-TRAY

Diameter 7,5 cm

Weight 65 g



583

BOWL

Diameter 11 cm

Weight 200 g

ARTIST H. WOLFHAGEN

HENNING WOLFHAGEN . . . COPENHAGEN

PEWTER

DANSK TIN



791

TEA-CADDY

Height 24 cm

Weight 825 g

ARTIST E. SÄDOLIN

HENNING WOLFHAGEN . . . COPENHAGEN

PEWTER

DANSK TIN



790

TEA-CADDY

Height 24 cm

Weight 825 g

ARTIST E. SADOLIN

HENNING WOLFHAGEN .. COPENHAGEN

PEWTER

DANSK TIN



754

BOTTLE-TRAYS

757

Diameter 9 cm

Weight 115 g

ARTIST E. SADOLIN



752

Diameter 9 cm

Weight 115 g

BOTTLE-TRAY

646

Diameter 6,5 cm

Weight 40 g

ASH-TRAY

ARTIST H. WOLFHAGEN



648

ASH-TRAYS

643

Diameter 6,5 cm

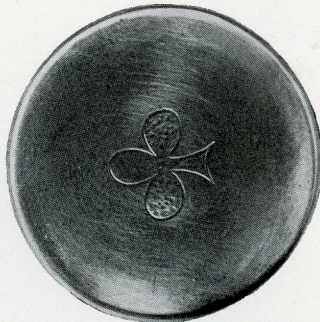
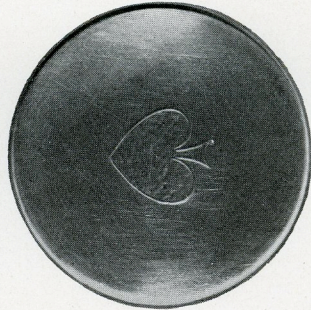
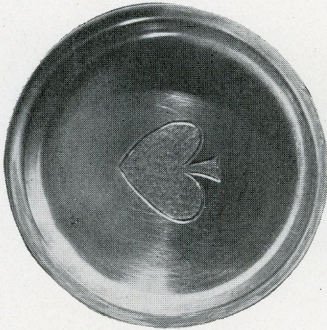
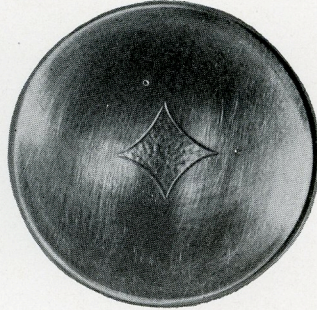
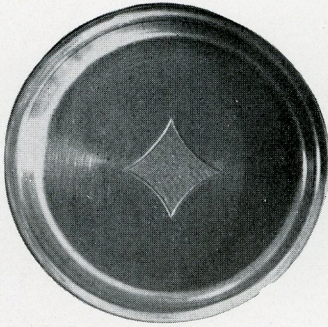
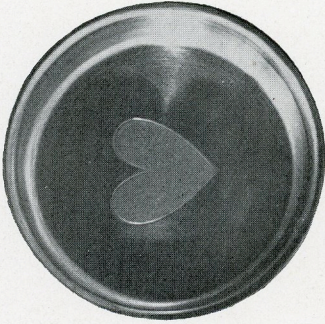
Weight 40 g

ARTIST H. WOLFHAGEN

HENNING WOLFHAGEN . . . COPENHAGEN

PEWTER

DANSK TIN



501-04
ASH-TRAYS FOR THE BRIDGE-TABLE

Weight 65 g

Diameter 7,5 cm

451-54
GLASS-TRAYS FOR THE BRIDGE-TABLE

Weight 45 g

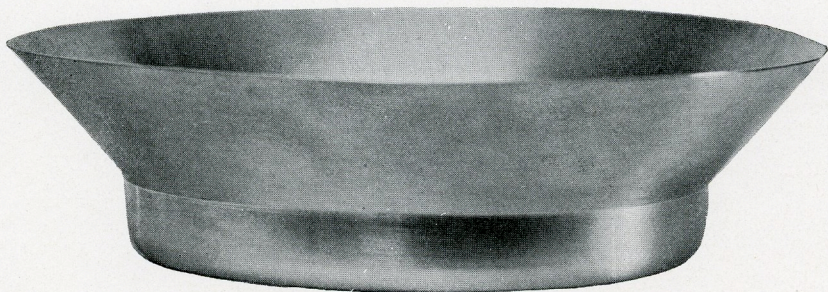
Diameter 7,5 cm

ARTIST H. WOLFHAGEN

HENNING WOLFHAGEN . . . COPENHAGEN

PEWTER

DANSK TIN



SIDE-VIEW



FROM ABOVE

770

FRUIT-BOWL

Diameter 22 cm

Weight 520 g

ARTIST H. WOLFHAGEN

HENNING WOLFHAGEN . . . COPENHAGEN

PEWTER

DANSK TIN

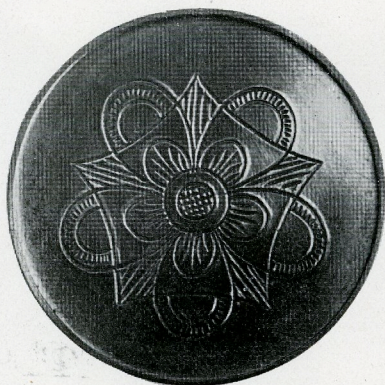


658

GLASS-TRAY

Diameter 7,5 cm

Weight 45 g



667



676

GLASS-TRAYS

Diameter 6,5 cm

Weight 30 g

ARTIST H. WOLFHAGEN

HENNING WOLFHAGEN .. COPENHAGEN

PEWTER

DANSK TIN



729

CAKE-DISH

Diameter 25 cm

Weight 525 g

ARTIST H. WOLFHAGEN

HENNING WOLFHAGEN .'. COPENHAGEN

PEWTER

DANSK TIN



928

Diameter 11 cm

Weight 175 g



927

Diameter 11 cm

Weight 175 g

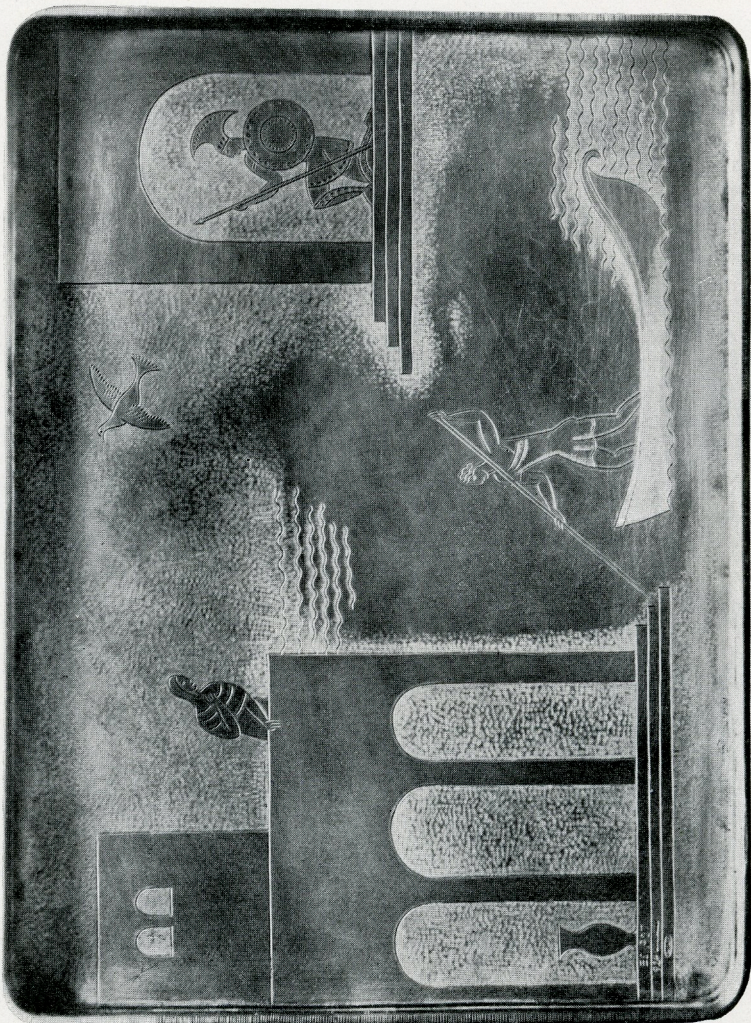
BOWLS

ARTIST E. SADOLIN

HENNING WOLFHAGEN . . . COPENHAGEN

PEWTER

DANSK TIN



924

SALVER

49 x 36,5 cm

Weight 5360 g

ARTIST E. SADOLIN

HENNING WOLFHAGEN ./. COPENHAGEN

PLATE 24

PEWTER

DANSK TIN



933

CUP

Height 21 cm

Weight 735 g

Pewter with ornaments in copper soldered on
and copper base

ARTISTS H. WOLFHAGEN AND E. SADOLIN

HENNING WOLFHAGEN . . . COPENHAGEN

PEWTER

DANSK TIN



934

CUP

Height 21 cm

Weight 730 g

Pewter with ornaments in brass soldered on
and brass base

ARTISTS H. WOLFHAGEN AND E. SADOLIN

HENNING WOLFHAGEN . . COPENHAGEN

PEWTER

DANSK TIN



969

CUP

Height 16 cm

Weight 320 g

Pewter with ornaments in brass soldered on
and middle piece in brass

ARTISTS H. WOLFHAGEN AND E. SADOLIN

HENNING WOLFHAGEN ./. COPENHAGEN